



# GAT MONTHLY MEMBERSHIP PROGRESS REPORT

Results as of: 11/30/2021

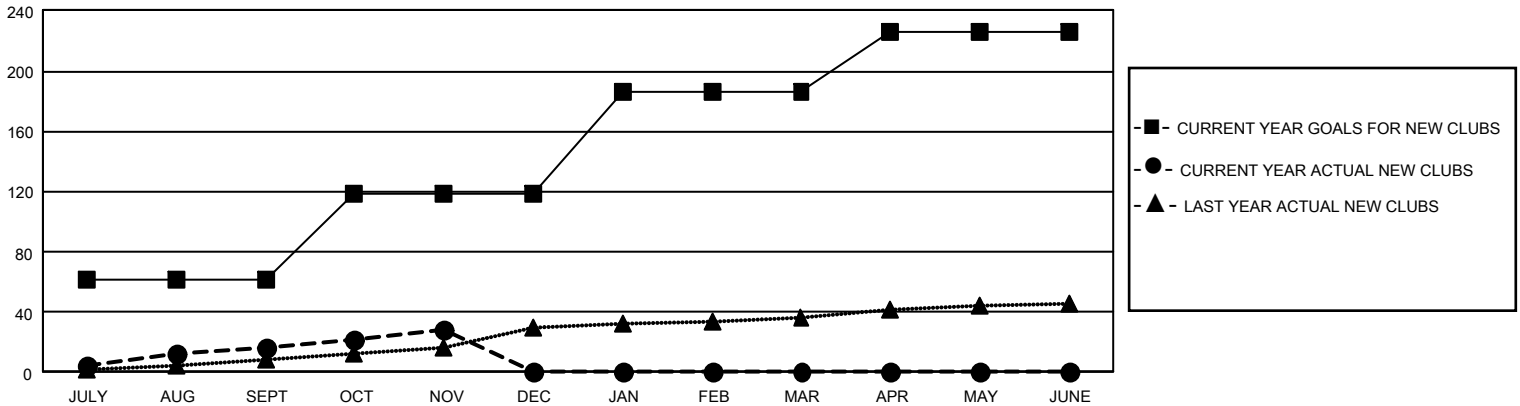
## GAT Constitutional Area 5 - Korea

REPORT DOES NOT INCLUDE CLUBS IN UNDISTRICTED AREAS.

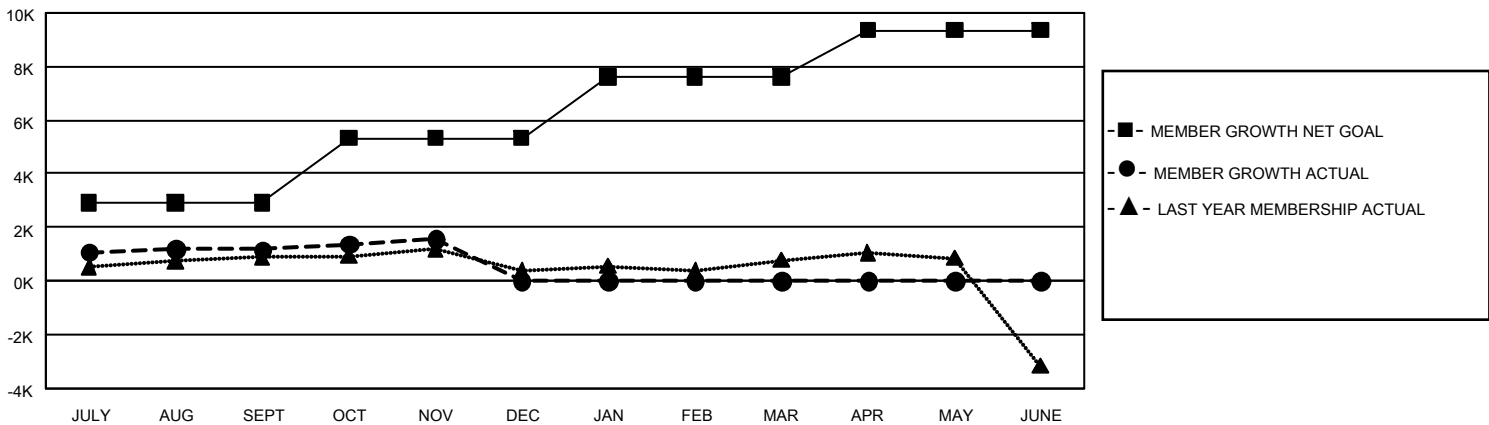
Clubs			
RESULTS FOR 2021-2022			
QUARTER	NEW CLUB GOAL	NEW CLUBS	DROPPED CLUBS
JULY/AUG/SEPT	183	16	27
OCT/NOV/DEC	174	12	1
JAN/FEB/MAR	201	0	0
APR/MAY/JUNE	120	0	0

Members			
RESULTS FOR 2021-2022			
QUARTER	MEMBER GROWTH NET GOAL	MEMBER GROWTH ACTUAL	DROPPED MEMBERS ACTUAL (including transfers)
JULY/AUG/SEPT	2925	3,743	2,365
OCT/NOV/DEC	2400	1,404	940
JAN/FEB/MAR	2293	0	0
APR/MAY/JUNE	1738	0	0

GOALS AND ACTUAL NEW CLUBS CUMULATIVE



GOALS AND ACTUAL MEMBERS CUMULATIVE



<b>DROPPED CLUBS: 28</b>	1,096 CLUBS OF 2,067 ADDED 1 OR MORE NEW MEMBERS  <a href="#">CLICK HERE FOR CUMULATIVE MEMBERSHIP DATA</a>	<b>GENDER DISTRIBUTION</b>	
		MALE 55,674 (74.61%) FEMALE 18,944 (25.39%) NON BINARY 0 (0.00%) PREFER NOT TO ANSWER 0 (0.00%)	TOTAL FAMILY UNIT MEMBERS 5,845 FAMILY MEMBERS PAYING HALF DUES 3,409
<b>DROPPED MEMBERS</b>			
DECEASED 95 CLUB CANCELLED 278 OTHER 2,932 <b>TOTAL 3,305</b>			